

This is a consolidated copy of the following bylaws, provided for CONVENIENCE only.

1. Anmore Parking Regulation and Enforcement Bylaw No. 308-2001
2. Anmore Parking Regulation and Enforcement Amendment Bylaw No. 357-2003
3. Anmore Parking Regulation and Enforcement Amendment Bylaw No. 447-2008
4. Anmore Parking Regulation and Enforcement Amendment Bylaw No. 450-2008
5. Anmore Parking Regulation and Enforcement Amendment Bylaw No. 482-2009
6. Anmore Parking Regulation and Enforcement Amendment Bylaw No. 499-2010
7. Anmore Parking Regulation and Enforcement Amendment Bylaw No. 564-2017
8. Anmore Parking Regulation and Enforcement Amendment Bylaw No. 603-2019

For copies of the individual bylaws, please contact the Manager of Corporate Services.

VILLAGE OF ANMORE

BYLAW NO. 308-2001

A bylaw for the regulating, control or prohibition of stopping,
standing or parking of vehicles within the Municipality

The Municipal Council of the Village of Anmore in open meeting assembled, enacts as follows:

1. This bylaw may be cited as “Anmore Parking Regulation and Enforcement Bylaw No. 308-2001”
2. That “Anmore Parking Regulation and Enforcement Bylaw No. 108-1993” is hereby repealed.

AMENDED BY BYLAW NO. 564-2017

3. DEFINITIONS

Boulevard means the portion of a highway between the curb lines or the lateral lines of a roadway or edge of shoulder, and the adjoining property line and includes pathways and walkways;

Bylaw Enforcement Officer means a person appointed from time to time by the Council as the Bylaw Enforcement Officer for the Village;

Chief Administrative Officer means the person appointed by Council to that position and includes anyone authorized by Council to act on behalf of the Chief Administrative Officer;

Combination of Vehicles means every combination of truck, truck tractor, semi-trailer and trailer;

Commercial Vehicle means a motor vehicle having permanently attached to it a truck or delivery body, an ambulance, casket wagon, fire apparatus, hearse, motor bus, tow car, a combination of vehicles and other vehicles as specified by regulation of the Lieutenant Governor in Council;

Contractor means the Towing Company contracted by the Village to tow vehicles parked illegally within the boundaries of the Village;

Operations Superintendent means the Operations Superintendent for the Village;

RCMP Member means a member of the Royal Canadian Mounted Police;

Trailer includes a vehicle without motive power designed to be drawn by or used in conjunction with a motor vehicle and constructed so that no appreciable part of its weight rests on or is carried by the motor vehicle, but does not include a house trailer or a trailer having a gross weight of less than 700 kg that is licenced un the *Motor Vehicle Act*; and

Village means the Village of Anmore.

4. Schedule "A" appended to and forming part of this bylaw shall designate those streets and highways within the Village that are subject to parking restrictions and/or regulations as evidenced by traffic control devices and signage. **(Bylaw 603-2019)**

AMENDED BY BYLAW NO. 564-2017

AMENDED BY BYLAW NO. 482-2009

5. Parking is not permitted on any Boulevard in the Village of Anmore.

AMENDED BY BYLAW NO. 482-2009

6. Parking is not permitted on any pathway/walkway in the Village of Anmore.

VEHICLE IMPOUNDMENT

AMENDED BY BYLAW NO. 564-2017

7. Any chattel, obstruction or vehicle which is standing or parked contrary to Schedule "A" of this bylaw may be removed, detained and impounded by the Bylaw Enforcement Officer, Operations Superintendent, RCMP Member or the Chief Administrative Officer or by a contractor acting in accordance with the directions of the Village.

AMENDED BY BYLAW NO. 564-2017

[Sections 6, 8, 9, 10 were removed and subsequent sections renumbered accordingly.]

8. Any chattel, obstruction or vehicle removed, detained or impounded under this bylaw may be recovered by the owner at the Impoundment Lot, by paying the outstanding penalties levied by the Village, and fees, costs and expenses levied in accordance with Section 7 to the tow truck company at its place of business.
(Bylaw 603-2019)

COMMERCIAL VEHICLES

9. Commercial Vehicles may not park on any Municipal Highway between the hours of 8 p.m. to 8 a.m.
10. Any Commercial Vehicle found parked on any Municipal Highway between the hours of 8 p.m. to 8 a.m. may be ticketed and/or towed and impounded.

**AMENDED BY BYLAW NO. 499-2010
RAVENSWOOD DRIVE RESIDENT PARKING**

11. The residents of Ravenswood Drive be permitted to park on Ravenswood Drive as designed on Map 6 of Schedule "A" of this bylaw.

READ a first time this 26th day of June ,2001 A.D.

READ a second time this 26th day of June , 2001 A.D.

READ a third time this 26th day of June , 2001 A.D.

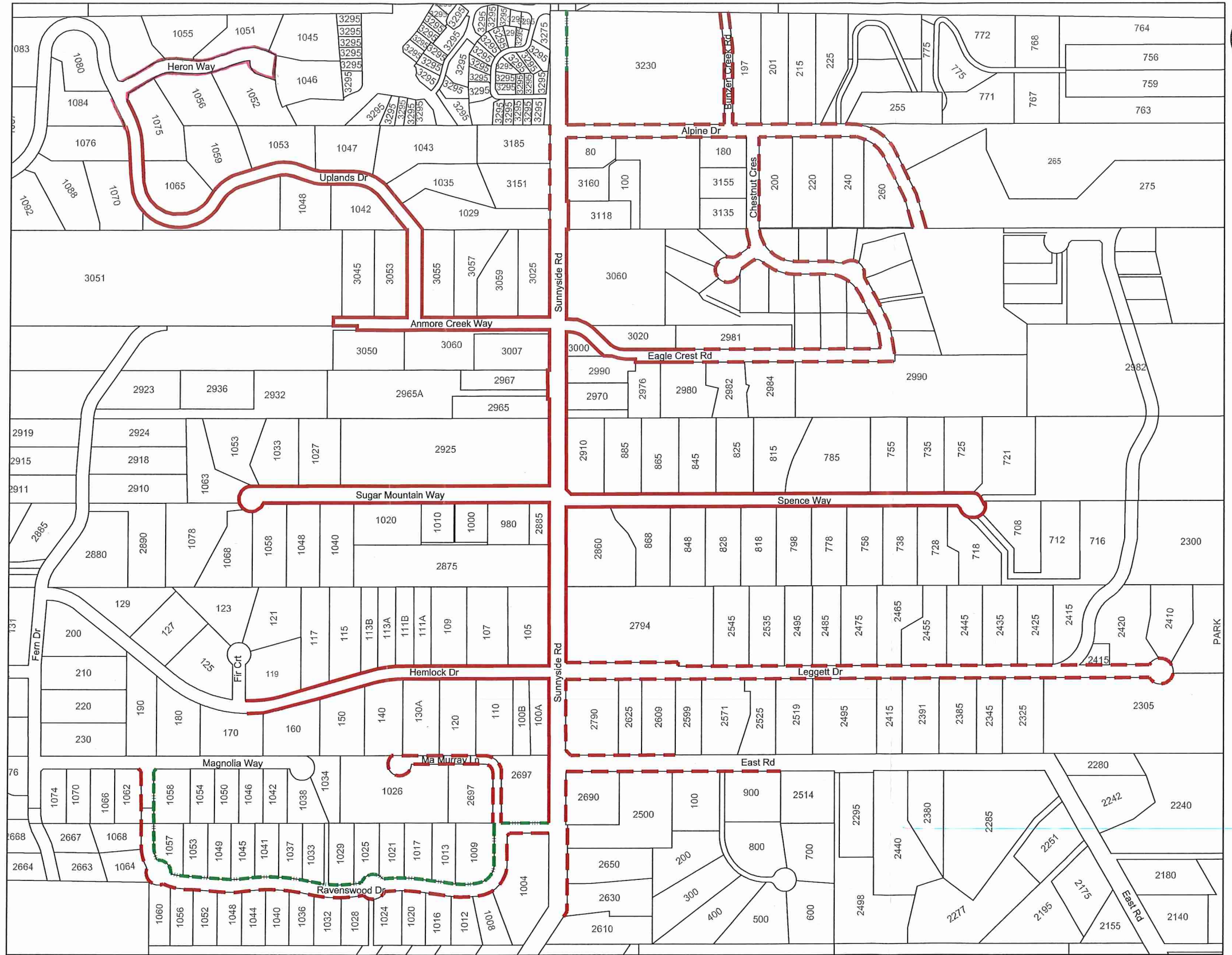
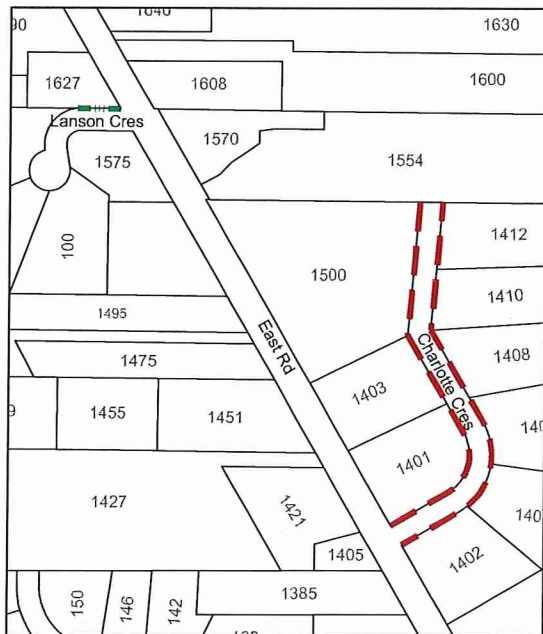
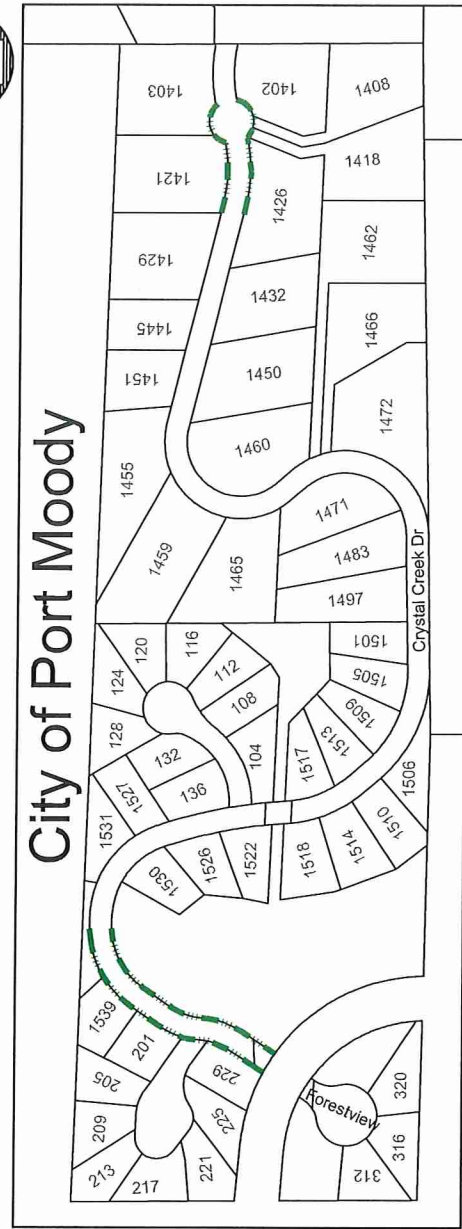
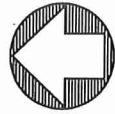
RECONSIDERED, FINALLY PASSED AND ADOPTED this 29th day of June, 2001 A.D.

H. Weinberg

MAYOR

H. Carley

CLERK



- NO PARKING
- NO PARKING ON WEEKENDS & STAT HOLIDAYS FROM MAY 1 TO OCT 1
- 5 MINUTE PARKING
- TEMPORARY PARKING RESIDENTS

SCHEDULE A
Parking Restriction Map

