

**EXISTING
WATER SYSTEM PLAN**

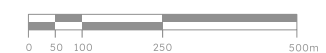
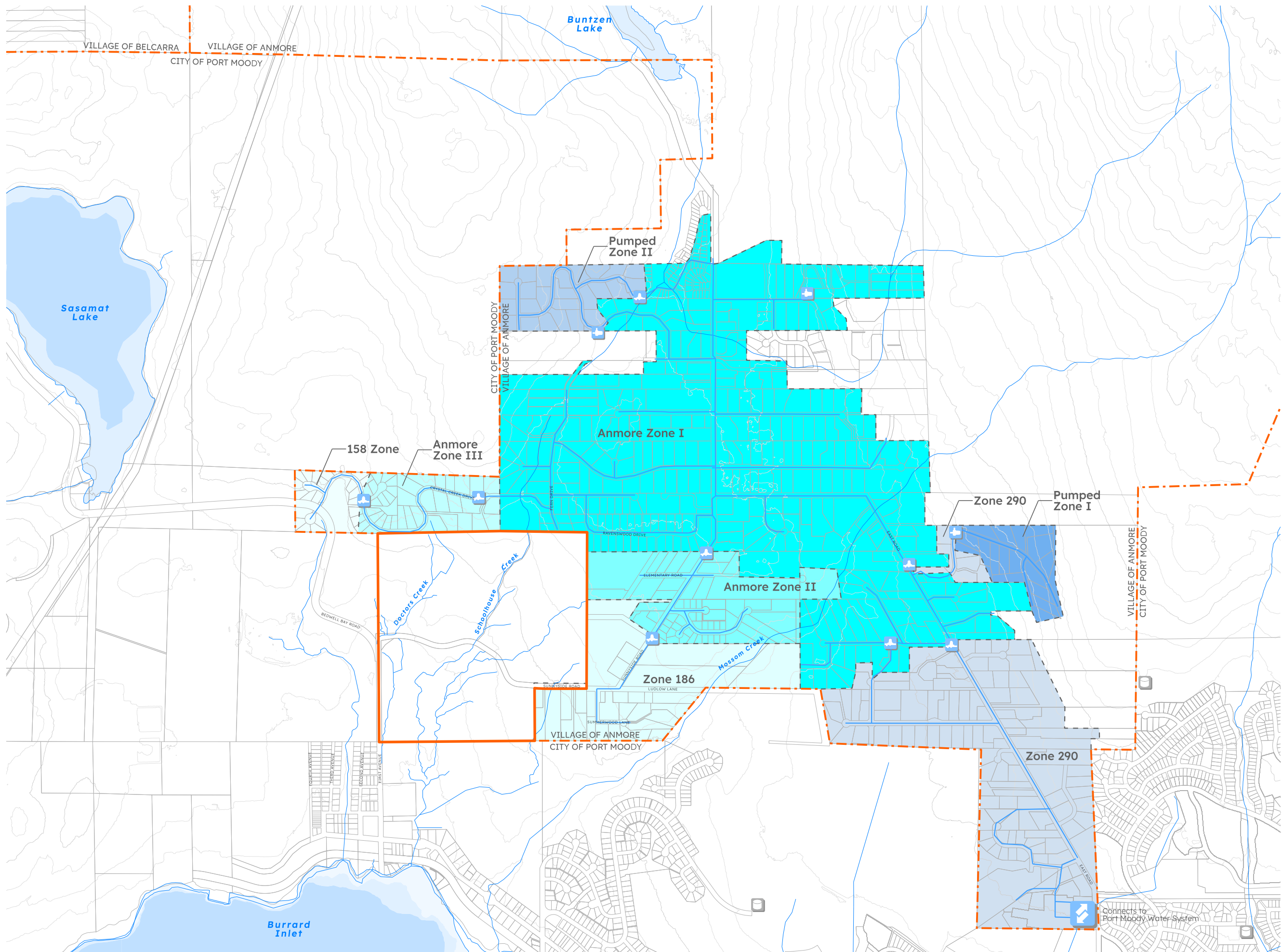
LEGEND JUNE 2024

- Site Boundary *61.14 ha | 151.08 ac*
- Municipality Boundary
- Property Line
- 100m Contour
- 25m Contour

- PRESSURE ZONE**
- Pressure Zone Boundary
 - 411m Zone | Pumped Zone I
 - 377m Zone | Pumped Zone II
 - 290m Zone | Port Moody Connection
 - 247m Zone | Anmore Zone I
 - 209m Zone | Anmore Zone II
 - 196m Zone | Anmore Zone III
 - 186m Zone
 - 158m Zone

- ANMORE**
- Distribution Main
 - Port Moody Tie-in Point
 - Existing Pump Station
 - Pressure Reducing Valve

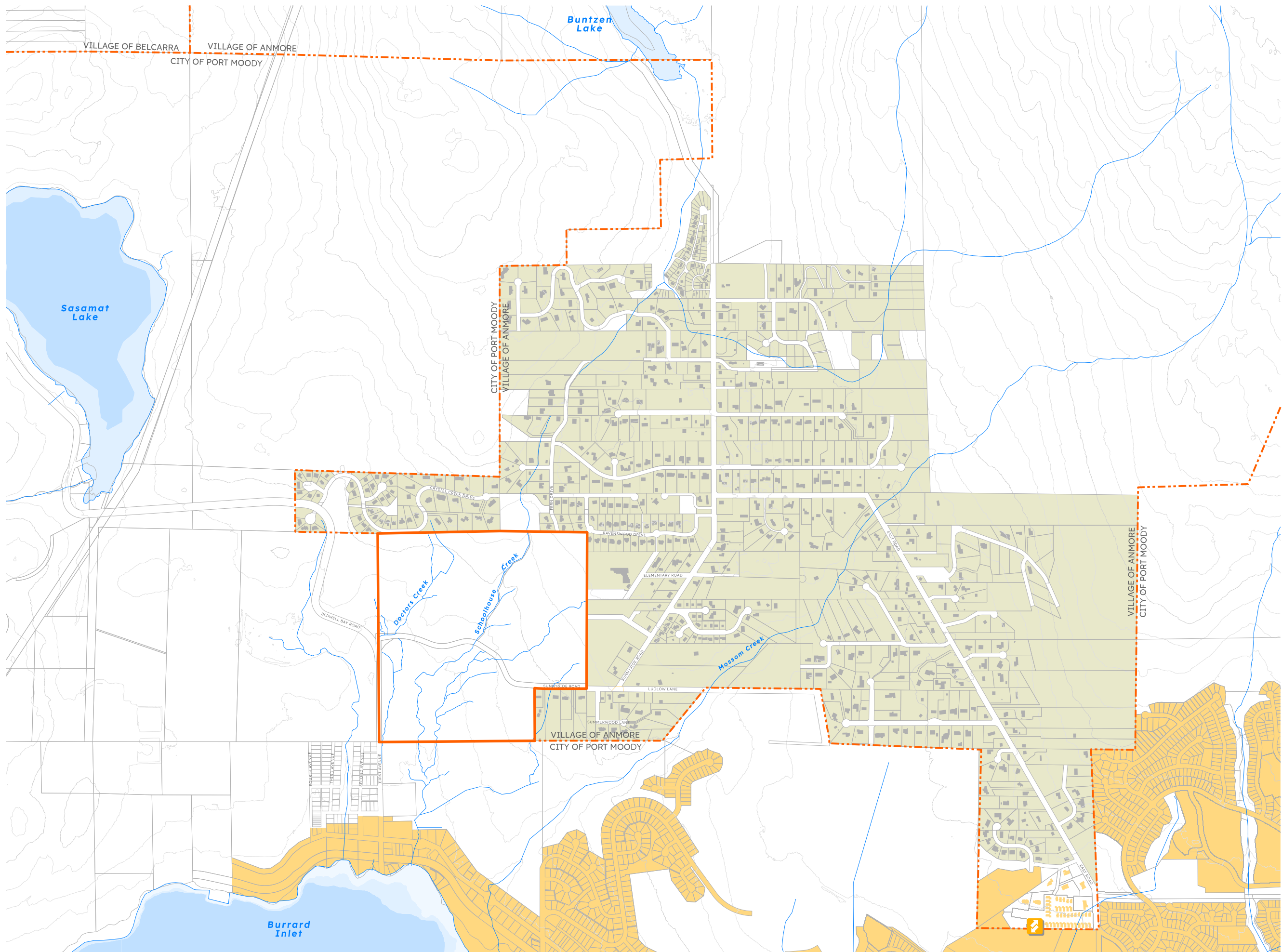
- PORT MOODY**
- Existing Reservoir



**EXISTING
SANITARY SYSTEM PLAN**

LEGEND JUNE 2024

-  Site Boundary *61.14 ha | 151.08 ac*
-  Municipality Boundary
-  Property Line
-  25m Contour
-  100m Contour
-  Serviced By Private Septic Systems
-  Serviced By Metro Vancouver Sanitary System
-  Connection to Metro Vancouver Sanitary System



**EXISTING DRAINAGE
SYSTEM PLAN**

LEGEND JUNE 2024

- Site Boundary *61.14 ha | 151.08 ac*
- - - Municipality Boundary
- Property Line
- ~ ~ ~ 100m Contour
- ~ ~ ~ 25m Contour

- DRAINAGE SYSTEM**
- Stormwater Pipe + Ditch System
- Watercourse
- - - Watershed Boundary

- LANDFORM**
- 800m - 900m
- 700m - 800m
- 600m - 700m
- 500m - 600m
- 400m - 500m
- 300m - 400m
- 200m - 300m
- 100m - 200m
- 0m - 100m

